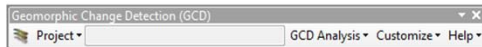


GEOMORPHIC CHANGE DETECTION

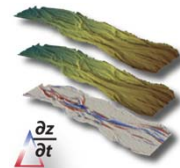
I. APPLES & ORANGES AND THE HYBRID-SURVEY DILEMMA



USACE Workshop

Kansas City








May 30- June 1, 2012



**US Army Corps
of Engineers®**



WORKSHOP PLAN – DAY 1... (AFTERNOON)

	F. Traditional Approaches to Change Detection	13:30 to 14:30
	G. Intro to GCD Software	14:30 to 15:00
	H. Thresholding Alternatives	15:00 to 15:30
	I. Alt. Approaches (Spatial Coherence + Bayesian)	15:30 to 15:45 Break 15:45 to 16:15
	J. Spatially Variable Error	16:15 to 16:30
	K. Multi-Method Surveys	16:30 to 16:45
	L. Recap & Preview of Day 2	16:45 to 17:00ish

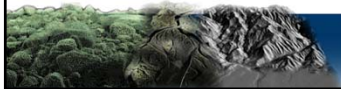
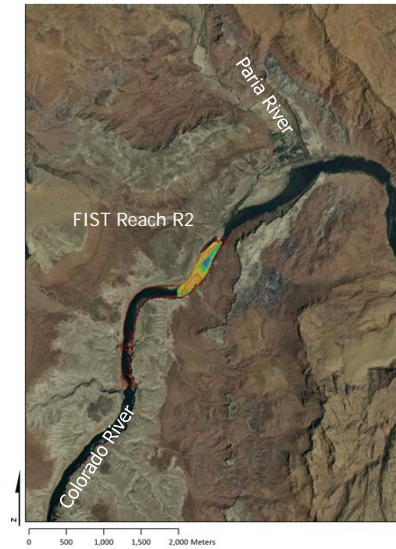


A Plan.. Not a Contract



WHAT'S THE DIFFERENCE?

- Paria Reach
 - FIST Reach R2
 - Six Surveys over four years (2000 to 2004); five epochs:
 - 2000 August
 - 2000 September
 - **2002 May**
 - **2004 May**
 - 2004 November
 - 2004 December
 - Used 121,843 of 311,371 points for 2002 & 86,142 of 251,739 points for 2004



SUBSET OF DATA

- Hybrid Data Types
 - LiDaR ($\sigma = 15$ cm)
 - Multibeam Smooth ($\sigma = 3$ cm)
 - Multibeam Rough ($\sigma = 12$ cm)
 - Total Station ($\sigma = 6$ cm)
- What to do?

